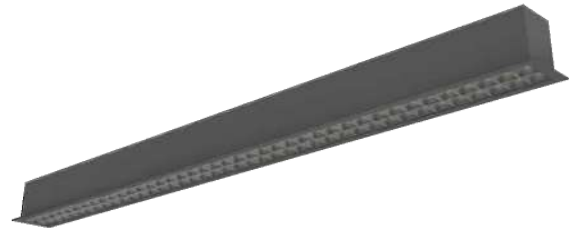


LINE PRO NECO R

LED 29W a 90W **115 lm/W**



Características mecánicas Mechanical specifications



Material del cuerpo: Aluminio
Housing material: Aluminium

Material del difusor: Antirreflejo con óptica reflectora altamente especular

Diffuser material: Anti-glare with highly specular reflector optics

Basculación: No
Tilting

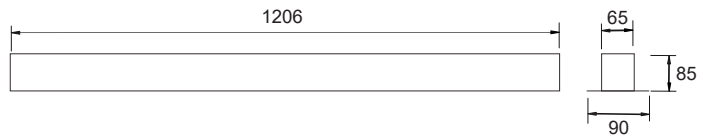
Colores: Blanco, negro o gris
Colors: White, black or grey

Tamaño: 3 tamaños según potencias
Size: 3 sizes according to powers

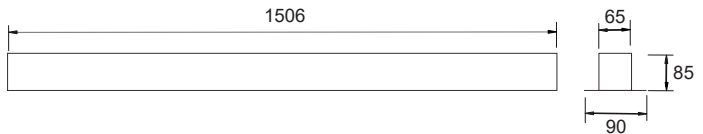
Opciones de montaje: Empotrada.
Mounting options: Recessed.



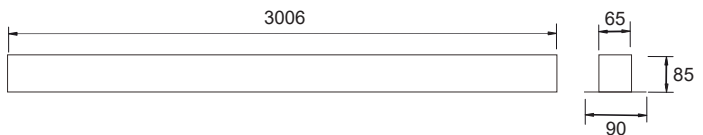
MODELO 1. 29W / 36W



MODELO 2. 36W / 45W



MODELO 3. 72W / 90W



Características ópticas Optical specifications

LED: CREE CXB Series

LED

Potencias: 29W / 36W / 45W / 72W / 90W
Power

Flujo luminoso: de 3200 lm a 10000 lm
Luminous flux: from 3200 lm to 10000 lm

Eficacia: 115 lm/W
Efficacy

IRC (CRI): >80

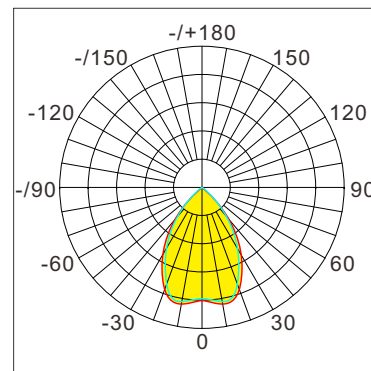
Temperatura de color: 3000K - 6000K
Color temperature

Ángulo de apertura: 45°
Beam angle:

Temperatura de trabajo: -40°C +50°C
Work temperature

Vida útil: L80 B20 / 50.000 h / 25°C
Lifespan

29W / 6000K



Wp & Á & á
— & € Á Đ Á ì € Á Á Á Á
— & 9€ Đ Ğ Ĩ € Á Á Á Á

Características eléctricas Electrical specifications

Driver: incluido

Driver: included

Voltaje de entrada: 200-240V AC
Input voltage

Frecuencia: 50/60 Hz
Frecuency

Factor de potencia: >0.9
Power factor

Dimable: 1-10V, DALI , opcional
Dimmable: 1-10V, DALI, optional