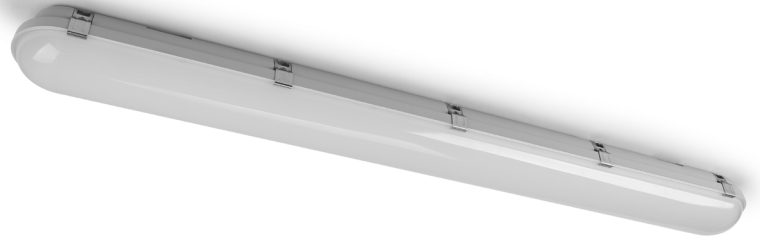
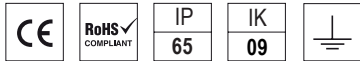


FLUORNET

LED 20W / 40W / 60W **140 lm/W**



Características mecánicas Mechanical specifications



Material del cuerpo: policarbonato

Housing material: polycarbonate

Material del difusor: policarbonato transp./ opal

Diffuser material: transp./ opal polycarbonate

Material de los clips: acero inoxidable

Clip material: stainless steel

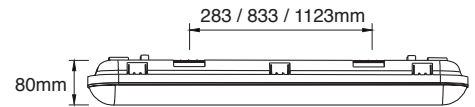
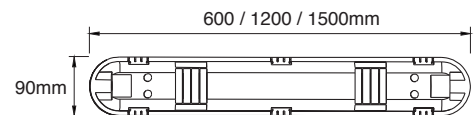
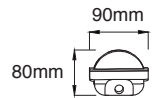
Protección: IP65, IK09

Protection

Tamaño: 90 x 600 x 80 mm (20W)

Size 90 x 1200 x 80 mm (40W)

90 x 1500 x 80 mm (60W)



Características ópticas Optical specifications

LED: SMD 2835

LED PREMIUM (OPTIONAL)

Potencias: 20W / 40W / 60W

Flujo luminoso: 2800lm / 5600lm / 8400lm

Luminous flux

Eficacia: 140 lm/W

Efficacy

IRC (CRI): >80

Temperatura de color: 3000K - 6000K

Color temperature

Ángulo de apertura: 120°

Beam angle

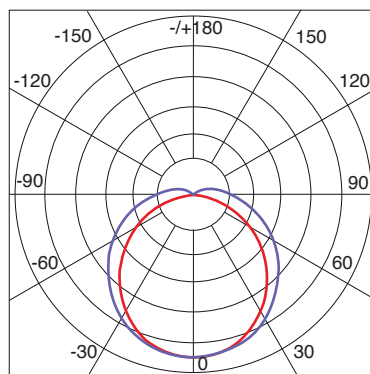
Temperatura de trabajo: -40°C +50°C

Work temperature

Vida útil: L80 B10 / 50.000 h / 25°C

L90 B10 / 105.000 h / 25°C (LED PREMIUM)

Lifespan



UNIT: cd
— c0 / c180
— c90 / c270

Características eléctricas Electrical specifications

Driver: Integrado

Driver: Integrated

Voltaje de entrada: 200-240V AC

Input voltage

Frecuencia: 50/60 Hz

Frecuency

Factor de potencia: 0.9

Power factor

Dimable: 1-10V, DALI , opcional

Dimmable: 1-10V, DALI, optional

Sensor de movimiento: opcional

Motion sensor: optional

Kit de emergencia: opcional

Emergency kit: optional

Kit de suspensión: opcional

Suspension kit: optional